



**First Monday Toy Auction  
5th December 2011**

**CATALOGUE**



### LOT 1

Hornby O-gauge LMS Brake van. No box, some slight rust on edge of roof & one corner of body, some paint missing from roof, good.

**Starts at: \$10**



### LOT 2

Hornby O-gauge goods platform with box with torn corner of lid, but generally good. Platform has some surface rust, tin printed walls are very good, roof has slight crease, very good.

**Starts at: \$60**



### LOT 3

Hornby O-gauge No. 2 Pullman. Has replacement windows, very slight dent on roof, one mansell wheel is cracked, good/very good.

**Starts at: \$80**



### LOT 4

Hornby O-gauge Southern Milk Traffic Van. Box fair/good, missing one flap. Van roof is bent on one corner. Wheels are plastic. Condition, very good.

**Starts at: \$20**



### LOT 5

Hornby O-gauge Metropolitan Coach. Roof has very slight dents & has been repainted. There are slight scratches on body. Condition, very good.

**Starts at: \$150**



### LOT 6

Hornby O-gauge No. 1 clockwork LMS 623 tank loco circa 1926. Motor works, but needs some TLC, cab is slightly distorted, front coupling is broken, front right hand buffer is missing. No box. Condition, fair.

**Starts at: \$30**



## LOT 7

Hornby O-gauge 6x metal signs: York, Newcastle, Edinburgh, Grantham, Kings Cross, Doncaster, Paint chipped, Condition, fair only

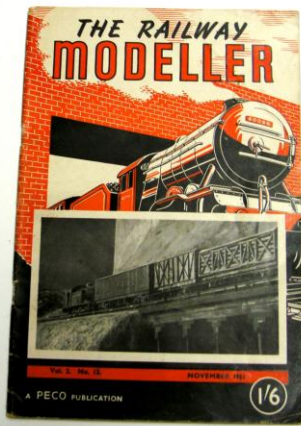
**Starts at: \$20**



## LOT 8

Marklin Gauge-1 Steeplecab electric 0-4-0 3-rail loco. No box  
Condition, fair/good.

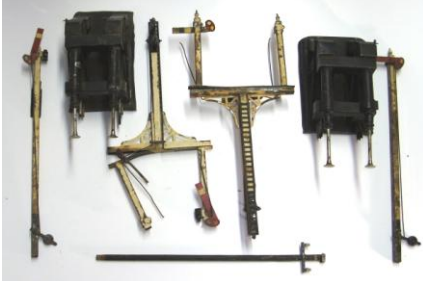
**Starts at: \$650**



## LOT 9

Magazine 'The Railway Modeller' Nov. 1951. Small piece torn out of back page, otherwise excellent.

**Starts at: \$10**



## LOT 10

Two Bing Gauge-1 Hydraulic Buffer Stops, parts of Gauge-1 semaphore arm signals & telegraph pole. Buffers fair/good, signals poor.

**Starts at: \$90**



## LOT 11

Scratchbuilt O-gauge timber Sydney Suburban Electric Car 3-rail. Body is fair, but motor & bogies very good. No box.

**Starts at: \$60**



## LOT 12

Probably a Hallmen O-Gauge Australian clerestory roofed carriage. Paint on roof scuffed, slight paint loss on sides. Condition, good.

**Starts at: \$80**



## LOT 13

Two Lionel O-Gauge bogie Box Cars - one New York Central, one Automatic merchandising. Both contain some form of internal mechanical effect. No boxes. Condition, good.

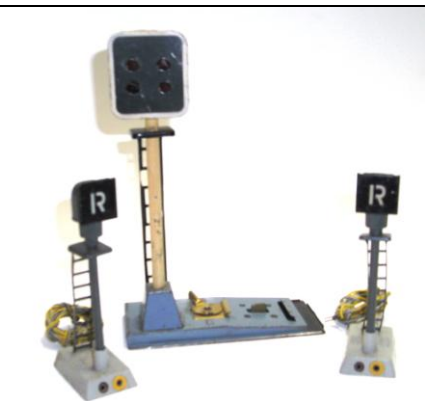
**Starts at: \$40**



## LOT 14

Hallmen O-Gauge. Rare post war Australian bogie Coach with mansard roof. Condition, very good/excellent.

**Starts at: \$100**



## LOT 15

Three JEP 20v signals ladder on one of smaller signals bent. Condition, very good.

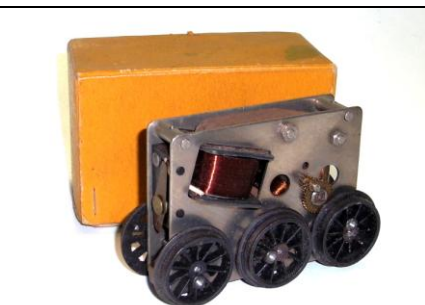
**Starts at: \$40**



## LOT 16

American Flyer O-gauge Loco, Tender & 3 Wagons. Loco 3 rail electric 2-6-4, wheels are corroded, rear bogie wheels disintegrating or missing, bogie tender is missing 2 axles & wheels. High side wagon, goods van & caboose in need of good clean, some paint missing. Wagons, fair/good, loco poor.

**Starts at: \$60**



## LOT 17

Six wheel Australian electric mech. with box. Slight surface rust on laminates. Probably unused, Condition, very good.

**Starts at: \$100**



## LOT 18

Four Gauge-1 Basset-Lowke timber & litho paper Wagons. LMS Brake Van condition good. MR High Side Wagon condition good. MR High Side Wagon missing axle & wheels & buffers condition fair only. 'Lowko Spirit' metal & timber Tanker missing

one axle & wheels & one buffer condition fair.

**Starts at: \$300**



## LOT 19

Parfait Products (USA) 3 rail electric FLEX-I-TRACK with box & instructions (2 corners of box torn) Condition, very good.

**Starts at: \$20**



## LOT 20

Bassett-Lowke Gauge-1, 4-4-0 Live Steam Loco & Tender, with LMS Dining Car, LMS 1<sup>st</sup> & LMS Brake 3<sup>rd</sup> Coaches all very good considering age

**Starts at: \$3000**



## LOT 21

Two Robilt O-gauge bogie Coaches, later style with Bettendorf bogies & Hornby style couplings. Slight rust on sides & roof. Condition, good.

**Starts at: \$100**



## LOT 22

Basset-Lowke O gauge black Live Steam Loco & Tender. No. 62759 with burner, some damage. Condition, good.

**Starts at: \$300**



## LOT 23

Basset-Lowke O-gauge 4-4-0 Live Steam Loco & Tender. Some paint loss on smoke box & boiler, otherwise very good. (shown with tender from Lot 26)

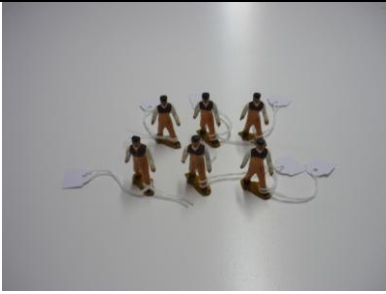
**Starts at: \$300**



## LOT 24

'Chemin De Fer' Nostalgic look at a toy train from the early days of steam train toys, with locomotive & coach. By John Cervenka Design #347-1036 edition 3, 2005.

**Starts at: \$100**



## LOT 25

Six O-gauge Diecast Railway Workers – all the same pose, probably reproductions, all very good

**Starts at: \$10**



## LOT 26

Basset-Lowke O-gauge green 0-6-0 Live Steam Loco & Tender No. '33'. Some paint loss on smoke box & boiler, otherwise very good.

**Starts at: \$300**



## LOT 27

Gauge-1 tinplate Hopper wagon, 'New York Central Lines' Condition, very good.

**Starts at: \$80**



## LOT 28

Gauge-1 tinplate Boxcar 'N.Y.C.R.R.' 2926. Condition, very good.

**Starts at: \$80**

NO PICTURE

## LOT 29

Ace Trains (UK) O-gauge Canopy Station new and complete in unopened carton

**Starts at: \$300**



## LOT 30

Tootsie Toy Railway Locomotive & Caboose, both pre-war. Breakdown. Condition Sound with some paint loss.

**Starts at: \$25**



### LOT 31

Britains O-gauge Hollow-Cast Golfer together with female passenger-both very fine condition.

**Starts at: \$100**



### LOT 32

Britains O-gauge Hollow Cast Porter with barrow & two pieces of baggage in very fine condition

**Starts at: \$75**



### LOT 33

Taylor & Barret O-gauge Hollow Cast Railway Family, consisting of gentleman, woman & two children. Pre-war – all in very good condition.

**Starts at: \$100**



### LOT 34

Four O-gauge Railway Station Platform Machines attributed to Leeds Model company – All in very good condition

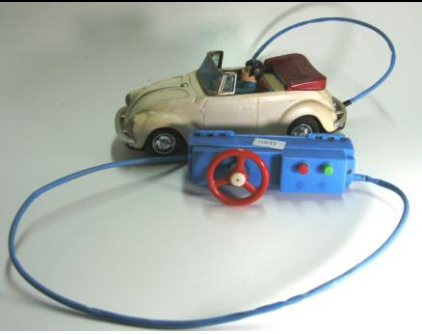
**Starts at: \$75**



### LOT 35

Hard Cover Book on Victorian Railways – “Victorian Railways TO ‘62” by Leo J. Harrigan in excellent condition

**Starts at: \$50**



### LOT 36

Shinsei (Japan) Tinplate Volkswagen Convertible. Battery remote control, stop, start & steering. No box. Condition, very good.

**Starts at: \$60**



### LOT 37

'New Toy' MF 316 (China) Friction drive (not working) with good box. Roof of car repainted, otherwise paint excellent. Condition, very good.

**Starts at: \$25**



### LOT 38

Bburago (Italy) diecast & plastic 1934 Bugatti type 59 scale 1:18, condition excellent.

**Starts at: \$10**



### LOT 39

Tinplate Japanese Ford Thunderbird (8 ¼ 210mm) Friction drive roadster, gold with cream and brown upholstery. Some slight rust left hand mudguard, left hand door, grille and front right hand wheel hubcap, otherwise paint excellent, motor works but needs attention, condition good-v-good.

**Starts at: \$60**



### LOT 40

Japanese '50's Flyer' friction drive Ford Thunderbird Coupe. Condition excellent.

**Starts at: \$80**



### LOT 41

'Leadworks' (Cleveland Ohio) made in Japan. 1950 Buick convertible. Scratches and dents on bonnet, steering wheel broken, hubcaps & dress rims missing, Friction drive works, but needs attention. Box and packing complete. Length 270mm. Condiion, fair.

**Starts at: \$40**





## LOT 42

American style 50's convertible friction drive. Slight surface rust & some paint crazing on body. Chrome plating dulled. No box. Length 250mm. Condition, fair-good.

**Starts at: \$50**



## LOT 43

Schuco 1229 'Old Timer' 1902 Mercedes Simplex. Clockwork, no key. Needs cleaning. Length 190mm. Box & packing complete. Condition good.

**Starts at: \$60**



## LOT 44

Bandai 7658 'Kingsize Cadillac' convertible. Battery operated. Slight dent on bonnet, missing right hand wing mirror, plating on dress rims dulled & slight loss on grille and bumpers. Box complete but small tear on lid & some water staining. Length 330mm. Condition, fair – good.

**Starts at: \$60**



## LOT 45

Bandai 4447 Cadillac sedan. Battery operated. Very slight plating loss on dress rims. Length 270mm. Box damaged. Condition very good.

**Starts at: \$80**



## LOT 46

American style 50's convertible with automatic erecting hardtop in boot. Battery operated. No box, some surface rust on chrome. Length 235mm. Condition, fair

**Starts at: \$75**



## LOT 47

Schuco 5505 Cadillac DeVille convertible. Battery operated. With box, length 280mm. Condition very good.

**Starts at: \$40**



### LOT 48

Cadillac convertible novelty radio, made in Hong-Kong. 9 volt battery. No box, length 250mm. Condition, good

**Starts at: \$20**



### LOT 49

Cadillac convertible (Japanese) friction drive (works) Very slight surface rust on chrome. No box, length 290mm. Condition, good, very good.

**Starts at: \$90**



### LOT 50

Bandai Cadillac convertible. Friction drive (works, but needs attention). Slight dent on roof, very slight pitting on bonnet. No box. Length 270mm Condition good

**Starts at: \$60**



### LOT 51

Cougar (Japan). Battery operated. No box. Condition good – very good.

**Starts at: \$60**



### LOT 52

Bandai American outline sedan. No box. Surface rust on chrome, missing back window, front wheels broken. Friction motor needs attention, some crazing on paintwork. Length 220mm Condition, poor

**Starts at: \$30**



### LOT 53

Bandai 816 Cadillac sedan 'Automobiles of the world' series. With box. Friction drive needs attention. Slight dent and scratch on boot lid. Length 250mm. Condition good.

**Starts at: \$50**



### LOT 54

Bandai Cadillac sedan. Friction drive (works). No box. Length 200mm. Condition, very good.

**Starts at: \$80**



### LOT 55

Ford Sedan (single spinner) Friction drive (working). No box. Surface rust on chrome. Length 180mm. Condition, good

**Starts at: \$65**



### LOT 56

Bandai Cadillac convertible. Friction drive (working). Brightwork dull, Slight surface rust. Length 290mm. Condition good

**Starts at: \$50**



### LOT 57

Bandai 'Golden Cadillac Battery Operated Gear Shift Car'. Convertible. With box. Length 270mm. Condition, very good.

**Starts at: \$90**



### LOT 58

Bandai Cadillac sedan. Friction drive. No box, few slight scratches on bonnet & roof. Condition, good.

**Starts at: \$70**



### LOT 59

Bandai Cadillac sedan. Friction drive (needs attention). Front windscreen cracked & windscreen surrounds tarnished. No box, length 185mm. Condition, fair – good.

**Starts at: \$40**



### LOT 60

Bandai Cadillac sedan. Friction drive (needs attention). No box, length 185mm. Condition, very good.

**Starts at: \$70**



### LOT 61

'Baby Cadillac' (Japanese). Friction drive (needs attention). With box. Brightwork tarnished. Length 125mm. Condition, fair – good.

**Starts at: \$35**



## LOT 62

'Baby Cadillac'. (Japanese). Friction drive (works). With box (missing flap). Brightwork tarnished. Length 125mm. Condition, good.

**Starts at: \$35**



## LOT 63

'New Bulldozer No.642' Battery operated tinplate. No box. Rubber treads not original, slight bend on blade. Length 240mm Condition good/very good.

**Starts at: \$40**



## LOT 64

'Battery Powered Bulldozer' Plastic & metal. Box with damaged lid. Missing treads and details on top of cowling. Length 180mm. Condition good.

**Starts at: \$20**



## LOT 65

Tinplate Penny Toy fire engine, clockwork (not working) missing mudguards and possibly top of boiler. No box. Length 115mm. Condition, fair

**Starts at: \$50**



## LOT 66

Fun-Ho No.804 (New Zealand) articulated scraper-tipper, amount of paint loss, otherwise very good.

**Starts at: \$25**



## LOT 67

Bandai Japanese tinplate friction drive Chevrolet Camaro. Length 200mm (7.75) condition very good

**Starts at: \$60**



## LOT 68

Bburago (Italy) diecast 1954 Mercedes-Benz 300S: - Condition excellent.

**Starts at: \$15**



## LOT 69

Empty box for 'Thunderbird Speedster'. Condition, fair/good.

**Starts at: \$20**



## LOT 70

Six assorted vehicles unboxed. 1: Miniature Model Planning Honda Roadster. 2: Corgi MGA 1600 MK1 roadster. 3: Corgi MGA 1600 MK1 coupe. 4: Brumm Jaguar D Type (?). 5: Top Collection Model Jaguar C Type. 6: Lledo Vanguards Mini. All cars very good condition.

**Starts at: \$30**



## LOT 71

Five assorted models. No boxes. 1; Corgi MGA 1600 Mk 1 2; Matchbox DY-3119 MGB-GT 3; red racing car, missing driver. 4; Corgi Shadow Ford DN1/1A 5; Quatzo (?) (Portugal) Ferrari 156 F1, one wheel off, but repairable. All cars very good condition.

**Starts at: \$20**



## LOT 72

Six assorted Corgi Classic vehicles. No boxes. 1: 1915 Model T Ford. 2: 1927 Bentley Le Mans. 3: 1912 Rolls Royce 40/50. 4: 1910 Renault 12/16. 5: 1927 Bentley Le Mans. 6: 1910 Renault 12/16. All very good condition.

**Starts at: \$20**



## LOT 73

Five assorted vehicles. No boxes. 1; Corgi Morris J van 2; 'Jouef Evolution' MGB, steering wheel loose. 3; Lledo Vanguard Mini, 4; 'Top Collection Model' (?) 5; Corgi MGA 1600 Mk 1. All vehicles very good.

**Starts at: \$30**



## LOT 74

Corgi Major 'Ecurie Ecosse' racing car transporter. No box. Condition fair/good.

**Starts at: \$50**



## LOT 75

Corgi 'Le Dandy' coupe Henri Chapron body on Citroen DS chassis. No box. Very slight loss of paint on door trim strips and left hand roof edge. Condition, very good.

**Starts at: \$30**



## LOT 76

Corgi Hillman Hunter. No box. Car is suitably dirty, but in good condition.

**Starts at: \$30**



## LOT 77

Corgi Porsche Carrera. No box. Decal carrier film slightly discoloured, very slight paint loss. Condition, good.

**Starts at: \$20**



## LOT 78

Corgi Mercedes-Benz 300 SL roadster. No box. Condition, excellent.

**Starts at: \$40**



## LOT 79

Corgi Land Rover 109" WB utility. No box. Condition, fair.

**Starts at: \$5**



## LOT 80

Corgi Vanwall racing car. No box. Mismatched odd tyres, some paint loss, no driver. Condition, fair.

**Starts at: \$5**



## LOT 81

Corgi Major "Ecurie Ecosse" racing car transporter. No box. Condition, very good.

**Starts at: \$70**



## LOT 82

Corgi Marcos Volvo 1800. No box. Condition, very good.

**Starts at: \$30**



## LOT 83

Corgi Rover 2000. No box, some paint loss & scratches. Condition, fair/good.

**Starts at: \$30**



## LOT 84

Corgi Volvo P1800. No box, considerable paint loss & discolouration of decals. Condition, fair only

**Starts at: \$20**



## LOT 85

Corgi Major Bedford Carrimore car transporter. No box. Some paint loss.

**Starts at: \$50**



## LOT 86

Corgi Major 1104 Bedford Horse Transporter. With horses sheet of horse rugs. Very good/ excellent. Plus display pack (cond. Fair)

**Starts at: \$80**



## LOT 87

Corgi 341 Mini Marcos GT 850 with take-off wheels plus box. Condition excellent.

**Starts at: \$40**



## LOT 88

Corgi Oldsmobile Super 88. no box, condition fair.

**Starts at: \$20**



## LOT 89

Corgi WhizzWheels 301 ISO Grifo 7 litre. Plus box. Slight scuff marks on roof & doors. Condition very good.

**Starts at: \$30**



## LOT 90

Corgi 409 Mercedes-Benz Unimog tipper. With box. Condition excellent.

**Starts at: \$15**



## LOT 91

Corgi 418 Austin London taxi-cab. With box. Condition, excellent.

**Starts at: \$15**





## LOT 92

Corgi 429 Police Jaguar XJ 12C . With damaged box. Condition, excellent

**Starts at: \$20**



## LOT 93

Corgi 429 Police Jaguar XJ 12C. With damaged box. Condition, excellent.

**Starts at: \$20**



## LOT 94

Corgi 409 Mercedes-Benz Unimog tipper With damaged box. Rear right hand tyre perished. Condition, good.

**Starts at: \$15**



## LOT 95

Corgi Lincoln Continental with Lehmann-Peterson bodywork. No box. Windscreen cracked, paint chips off roof. Condition, fair.

**Starts at: \$10**



## LOT 96

Corgi 329 Ford Mustang Mach 1. With good box. Condition, excellent.

**Starts at: \$20**



## LOT 97

Corgi WhizzWheels 316 Ford GTO 70. With very good box. Very slight scuff marks on roof. Condition, very good/excellent.

**Starts at: \$30**



## LOT 98

Corgi Whizzwheels 387 Chevrolet Corvette Stingray coupe. With good box. Scuff marks on car roof. Condition, very good.

**Starts at: \$30**



## LOT 99

Corgi Whizzwheels 391 Ford Mustang Mach 1. With very good box. Condition, excellent.

**Starts at: \$45**



## LOT 100

Corgi Whizzwheels 283 OSI 'DAF-CITY'. Car with good box. Condition, excellent.

**Starts at: \$30**



## LOT 101

Corgi 259 'Le Dandy' coupe. Henri Chapron body on Citroen DS chassis. With very good box. Some chrome missing on front grille, very slight scuff marks on roof. Condition, very good.

**Starts at: \$30**



## LOT 102

Corgi 214 Ford Thunderbird. Box good, but missing one flap. Slight paint chips on car body. Condition good/ very good.

**Starts at: \$40**



## LOT 103

Corgi Fiat 2100. No box. Very slight paint loss on edges. Condition good/very good.

**Starts at: \$20**



## LOT 104

Corgi 403M Bedford 12cwt van 'KLG PLUGS'. Good box, van excellent.

**Starts at: \$40**



## LOT 105

Corgi Classics C859/9 Thornycroft Box Van. With good box. Condition, excellent.

**Starts at: \$10**



## LOT 106

Corgi Ford Escort 55. Box fair/good. Slight scuff marks on van roof. Condition very good.

**Starts at: \$10**



## LOT 107

3x Corgi 'Wild West' Nos. 112, 114, 122 in unopened packs. Condition very good/excellent.

**Starts at: \$10**



## LOT 108

Matchbox 'Speed Kings' ambulance. Box is badly damaged. Ambulance & two attendants excellent.

**Starts at: \$20**



## LOT 109

Matchbox King Size K2 Scammel Heavy Wreck truck. Box poor, truck condition, excellent.

**Starts at: \$30**



## LOT 110

Matchbox King Size Foden tipper truck. With good box. Truck condition, excellent.

**Starts at: \$30**



## LOT 111

Matchbox King Size K7 Refuse truck. Box fair, truck excellent.

**Starts at: \$40**



## LOT 112

Matchbox King Size K19 Scammel tipper truck, Box fair only, truck excellent.

**Starts at: \$30**



### LOT 113

Matchbox Super King K13 D.A.F building transporter (with load) no box. Condition, excellent.

**Starts at: \$20**



### LOT 114

Matchbox King Size K4 Leyland tipper truck. Box fair only, front tyres loose. Condition, very good/excellent.

**Starts at: \$20**



### LOT 115

Matchbox 'Models of Yesteryear' YMC 37790 1937 Dodge Airflow. 'Jack Daniels' With box, Condition, as new.

**Starts at: \$10**



### LOT 116

Matchbox Dinky YMC05/B 1970 Ford Mustang Boss 429 'Coca-Cola' with box, Condition, as new.

**Starts at: \$10**



### LOT 117

Matchbox Dinky YMC 05/B 1970 Ford Mustang Boss 429 'Coca-Cola' with box, Condition, as new.

**Starts at: \$10**



## LOT 118

Matchbox 'Models of Yesteryear' YYM 38030 1926 Ford TT van 'Matchbox Collectibles Guild'. With box. Condition, as new.

**Starts at: \$10**



## LOT 119

Matchbox 'Cruisin with Coke' collection, as new.

**Starts at: \$10**



## LOT 120

Matchbox collectables YMC 03B-M 1967 Pontiac GTO 'Coke, as new.

**Starts at: \$10**



## LOT 121

Match 'Ronask Mc Donald House' collection YCH 06-M 1920 Mack AC truck, Princess Margaret Hospital for Children, Perth, box slightly damaged, excellent.

**Starts at: \$10**



## LOT 122

Matchbox 'Third Annual Matchbox Guild Edition', 1948 GMC cab-over-engine truck as new

**Starts at: \$10**



## LOT 123

Three HO Trucks, a diecast Scania car Transporter with Trailer, red, a plastic Mercedes Semi Trailer "Thule", red, and a Norev diecast and plastic Semi Trailer Car Carrier, blue with a red MGB on board, all excellent but unboxed

**Starts at: \$**



## LOT 124

Five Matchbox 'Models of Yesteryear'. 1; YY018E/SA Atkinson Steam Wagon. (condition excellent) 2; Y1 1936 SS100 Jaguar (condition excellent) 3; Y15 1930 Packard Victoria (condition excellent) 4; 1935 ERA racing car (condition excellent) 5; Y15 1930 Packard Victoria (condition poor)

**Starts at: \$20**



## LOT 125

Two Matchbox items. 1; King Size K5 racing car transporter, & Major pack No.8 Guy Warrior car transporter. Some paint loss & windows scratched. No boxes, Condition fair.

**Starts at: \$20**



## LOT 126

.Matchbox car transporter. No box. Condition, excellent.

**Starts at: \$30**



## LOT 127

Five assorted models unboxed. 1: Mattel '65 Impala Hotwheels. 2: Cooee Collectables Road Racing Ford Falcon. 3: Hotwheels Pikes Peak Tacoma. 4: Mattel Hotwheels '68 Cougar. 5: Majorette F1 McLaren No.289. All cars very good condition.

**Starts at: \$10**



## LOT 128

Matchbox Collectibles. Sydney Olympic Games 3 car set with badge. 1956 Holden sedan, 1956 Holden panel van, 1956 Holden utility. Condition,

**Starts at: \$**



## LOT 129

Matchbox Gift Set 5001 20 Jaguar, with box as new

**Starts at: \$10**



## LOT 130

10 x Matchbox 'Mattel Wheels' (8) fire savers (13) Denworth T2000, (19) Chrysler Atlantic, (21) X-33 launch vehicle , (31) Porsche 911 GTI (36) wave buggy, (39) hydroplane, (47) Auto Chalet, (49) Isuzu Amigo, (74) turbo ski, all as new.

**Starts at: \$20**



## LOT 131

Britains. 2x 'Prize' Jersey cows. Some paint loss. Condition, good.

**Starts at: \$10**



## LOT 132

Britains. 2x post war bulls, one Devon (brown) & one Illawarra (black & white). Paint loss on both, Illawarra has damage to left hand horn. Condition, fair/good.

**Starts at: \$10**



## LOT 133

Britains. 6x standing cows, three brown & white, three black & white (none have world maps on side unfortunately). All are complete and straight but with some paint loss. Condition, good.

**Starts at: \$20**



## LOT 134

Japanese copy of Britains cow. Some paint loss, otherwise good.

**Starts at: \$10**





### **LOT 135**

Britains. Plastic Illawarra bull. Condition very good/excellent.

**Starts at: \$10**



### **LOT 136**

Britains grazing cow, some paint loss. Condition very good.

**Starts at: \$10**



### **LOT 137**

Britains resting cow. Missing one horn, some paint loss. Condition fair.

**Starts at: \$5**



### **LOT 138**

Britains. Stablehand, some paint loss, arm very loose but still attached. Condition, good.

**Starts at: \$5**



### **LOT 139**

Britains. No.40 farm wagon. Has wrong horse, some paint loss. Both items good.

**Starts at: \$20**



## LOT 140

Britains. No40 farm wagon. Has wrong horse. Both items fair/good, some paint loss.

**Starts at: \$20**



## LOT 141

Britains. Tractor & driver. Tractor missing seat, some distortion to mudguards and front axle assembly. Condition, fair/good.

**Starts at: \$50**



## LOT 142

Britains No.136F tractor roller with box (missing inner flap) Condition, excellent.

**Starts at: \$40**



## LOT 143

Britains No.4F tumbrel cart with box (fair only). Cart is missing tailgate, one hay ladder, shaft unit is detached from front axle. Condition of cart fair only, Horse has some paint loss, otherwise good, driver is good/very good condition.

**Starts at: \$20**



## LOT 144

Mainly Britons, mixed lot 10x broken or incomplete figures. Condition poor to fair.

**Starts at: \$5**



## LOT 145

5x Highland bagpipers, three different uniforms, two with broken pipes. Condition, fair to good.

**Starts at: \$10**



## LOT 146

14x plastic naval figures. Bases & some caps have been painted, otherwise condition, very good.

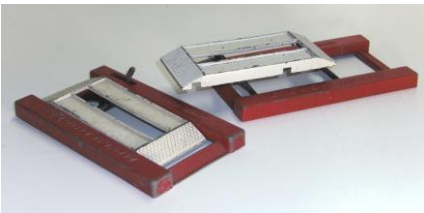
**Starts at: \$5**



## LOT 147

Chad Valley 'Escalado' horse racing game. Appears complete, Condition, good.

**Starts at: \$20**



## LOT 148

.2x Micro Models (New Zealand) repair hoists. No boxes. One complete & working, one missing parts. Condition good.

**Starts at: \$20**



## LOT 149

Micro Models (New Zealand) Ford Zephyr sedan. No box. Has been repainted. Condition, fair only.

**Starts at: \$40**



## LOT 150

Dinky Supertoys 982 Bedford Pullmore car transporter. No box, some paint loss, Condition, good.

**Starts at: \$60**



## LOT 151

Dinky Austin Healy. No box. Repaint, well done Condition, very good.

**Starts at: \$60**



## LOT 152

Dinky Morris Oxford. No box, back tyres perished, considerable paint loss. Condition, fair.

**Starts at: \$30**



### LOT 153

Dinky 237 Mercedes-Benz. No box, driver missing. Some paint loss Condition, fair.

**Starts at: \$20**



### LOT 154

Dinky 80B Jeep. No box, driver missing. Condition, very good.

**Starts at: \$40**



### LOT 155

Dinky Supertoys 982 Bedford Pullmore car transporter with No. 794 Loading ramp. No box, some paint loss. Loading ramp distorted. Condition fair/good.

**Starts at: \$40**



### LOT 156

Dinky Toys 150 Rolls Royce Silver Wraith, 2 tone grey, slight paint chips on light grey surface, good, box poor.

**Starts at: \$50**



### LOT 157

'Etoile Phante' Renault racing car. No box, some paint loss. Condition, fair/good.

**Starts at: \$30**



### LOT 158

German Tinplate Mechanical Duck on Trike, works well, excellent.

**Starts at: \$50**

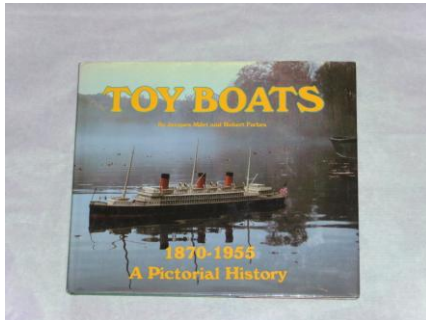


## LOT 159

Tucher and Walther #T305 Tinplate Ship "SS Bremen" boxed as new

**Starts at: \$150**

333



## LOT 160

"Toy Boats – A Pictorial History" book by Jacques Milet & Robert Forbes, 1<sup>st</sup> Edition 1979 Published by Charles Scribner's Sons – excellent condition.

**Starts at: \$20**



## LOT 161

"Art of the Tin Toy" book by David Pressland, 1<sup>st</sup> Edition 1976 Published by new Cavendish, Schiffer Condition excellent

**Starts at: \$25**



## LOT 162

Three Japanese Tin-Plate Comic cars circa 1960's – All excellent unused.

**Starts at: \$50**



## LOT 163

Franklin Mint. 1930 Bugatti Royale Coupe Napoleon. No box. Condition, excellent.

**Starts at: \$35**



### **LOT 164**

Franklin Mint. 1967 Mini Cooper with box & packing. Condition, excellent.

**Starts at: \$50**



### **LOT 165**

Franklin Mint. 1939 Maybach Zeppelin. No box. Condition, excellent.

**Starts at: \$35**



### **LOT 166**

Franklin Mint. 1933 Duesenberg SJ Twenty Grand. No box. Condition, excellent.

**Starts at: \$35**



### **LOT 167**

Franklin Mint. 1935 Mercedes-Benz 500 K Special roadster. No box. Condition, excellent.

**Starts at: \$35**



### **LOT 168**

Unidentified, may be Franklin Mint. (Chinese) Mercedes-Benz. No box. Condition, excellent.

**Starts at: \$35**



### **LOT 169**

Franklin Mint. 1938 Jaguar ss-100. No box. Condition, excellent.

**Starts at: \$35**



### LOT 170

Franklin Mint. 1907 Rolls-Royce Silver Ghost. No box. Damaged front windscreen. Condition, very good.

**Starts at: \$35**



### LOT 171

Franklin Mint. 1930 Duesenberg J Derham Tourster. No box. Condition, excellent.

**Starts at: \$35**



### LOT 172

Franklin Mint. 1936 Bugatti Type 57 SC. No box. Condition, excellent.

**Starts at: \$35**



### LOT 173

.Franklin Mint. 1935 Auburn Boat Tail Roadster. No box. Rear bumper unattached. Condition, Very good' excellent.

**Starts at: \$35**



### LOT 174

Chinese Celluloid Boy riding Swan with key, works well, very good.

**Starts at: \$20**



### LOT 175

Hornby Dublo Van – Condition good.

**Starts at: \$10**



## LOT 176

Triang Rovex R250 double ended diesel (non powered) with good box, very slight yellow paint loss either end. Condition, very good.

**Starts at: \$30**



## LOT 177

Hornby Dublo Esso petrol tanker. No box. Needs cleaning. Condition, very good.

**Starts at: \$40**



## LOT 178

Hornby OO BR 2-8-0 Steam Loco, class 2800, original packaging, excellent.

**Starts at: \$40**



## LOT 179

Hornby Dublo LNER articulated 3<sup>rd</sup> class & brake 3<sup>rd</sup> carriages. Roofs repainted, tinprinting almost unmarked. Condition, very good.

**Starts at: \$500**



## LOT 180

HO South Australian Co-Co Diesel Loco #5462, excellent unboxed

**Starts at: \$20**



## LOT 181

6 x Hornby Dublo 3 Rail electric points, 3 right and 3 left

**Starts at: \$20**



## LOT 182

Proto 2000 Series HO Limited Edition Santa Fe SW8/900, DCC with Sound, original packaging excellent.

**Starts at: \$125**





## LOT 183

Hornby Dublo Tin plate Horse Van Condition good.

**Starts at: \$10**



## LOT 184

Proto 2000 Series HO Limited Edition Santa Fe GP7II loco, DCC with Sound, original packaging excellent.

**Starts at: \$150**



## LOT 185

Three Tyco HO Space Wagons all very good – not sure if complete.

**Starts at: \$**



## LOT 186

Hornby Dublo 2 rail Set No. 2021 WR 'Red Dragon' Engine (ringfield motor), tender, two carriages, one length straight track, five curved. Box is damaged Condition, good.

**Starts at: \$150**



## LOT 187

.AHM (Jugoslavia) Southern Pacific BO-BO diesel 621A non motorised. No box. Condition, very good/excellent.

**Starts at: \$10**



## LOT 188

Roco HO boxed set No.43982. 'crocodile' electric loco & three coaches. Condition, excellent.

**Starts at: \$200**



### LOT 189

2 rail HO Pennsylvania CO-CO diesel No.5750. No box. Condition, very good/ excellent.

**Starts at: \$40**



### LOT 190

Ahearn HO F7 PRR Pass B plastic diesel kit in good box. Not motorised. Conditio Very good.

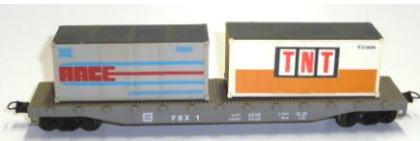
**Starts at: \$20**



### LOT 191

Bachmann OO BR Class 20 Diesel, DCC Ready, Weathered, original packaging, excellent

**Starts at: \$80**



### LOT 192

Lima HO bogie flat car with two containers. No box. Condition, very good.

**Starts at: \$10**



### LOT 193

.Freightline HO P625 container wagon ANR insulated. With box. Condition, as new.

**Starts at: \$15**



### LOT 194

4x Tyco items: 50' flat car-Southern Pulpwood car 334A. Santa Fe flat car piggy back. 54' covered hopper Planters 359C. 62' box car Delmonte 361B. Condition, good, boxes fair/good.

**Starts at: \$20**



### LOT 195

Bachmann OO BR 4MT Tank 2-6-4, black. Excellent but in wrong box, box marked weathered

**Starts at: \$80**



## LOT 196

Two Fleischmann HO No.1341. Union Pacific BO-BO diesels, boxes fair only, locos good/very good.

**Starts at: \$40**



## LOT 197

Athearn HO. Baltimore & Ohio DD-40 RTR 2-motor. With good box. Condition, very good/excellent.

**Starts at: \$25**



## LOT 198

Two AR (Australian) coal hopper wagon kits. Unopened.

**Starts at: \$20**



## LOT 199

Two Marklin HO 3 rail diesel BO-BO Rio Grande locos. One motorised, one unmotorised. No boxes. Condition, good.

**Starts at: \$40**



## LOT 200

.Triang Diesel Motor Coach 'Transcontinental' 2-rail. No box. Condition, fair.

**Starts at: \$35**



## LOT 201

Box of bits: 1x 0-6-0 Marklin tank loco, 1 bogie flatcar, 1x brake van, 1x buffer stop, 1x set of points, 1x station, 9x straight rails, 13x curved rails. Condition good.

**Starts at: \$50**